

# Word of the Day

## Autumn Term 2025

Week 15 – 8th December 2025



*'Words unlock the doors to a world of understanding...'*

# This Week's Words

Grasshopper

**gift**

**midnight**

**peace**

**tinsel**

**bauble**

Shinobi

**anticipation**

**lavish**

**nostalgia**

**yuletide**

**eve**



**VOCABULARY NINJA**

# Grasshopper (Tier 1)

**gift**

**midnight**

**peace**

**tinsel**

**bauble**



**VOCABULARY NINJA**

# Shinobi (Tier 2)

**anticipation**

**lavish**

**nostalgia**

**yuletide**

**eve**



**VOCABULARY NINJA**



# Grasshopper Word of the Day

Word of the Day:

Pronunciation / Syllables

Definition:

A gift is something that you give someone as a present.

gift  
(gift)

Word Class  
(noun)



Mrs Rasul gave every child a book as a **gift**.

Synonym:

present

offering

Antonym:

Prefix / Suffix:

counter-

-s

Rhyme:

shift

lift

Link Word:

birthday

Christmas



# Grasshopper Word of the Day

Word of the Day:

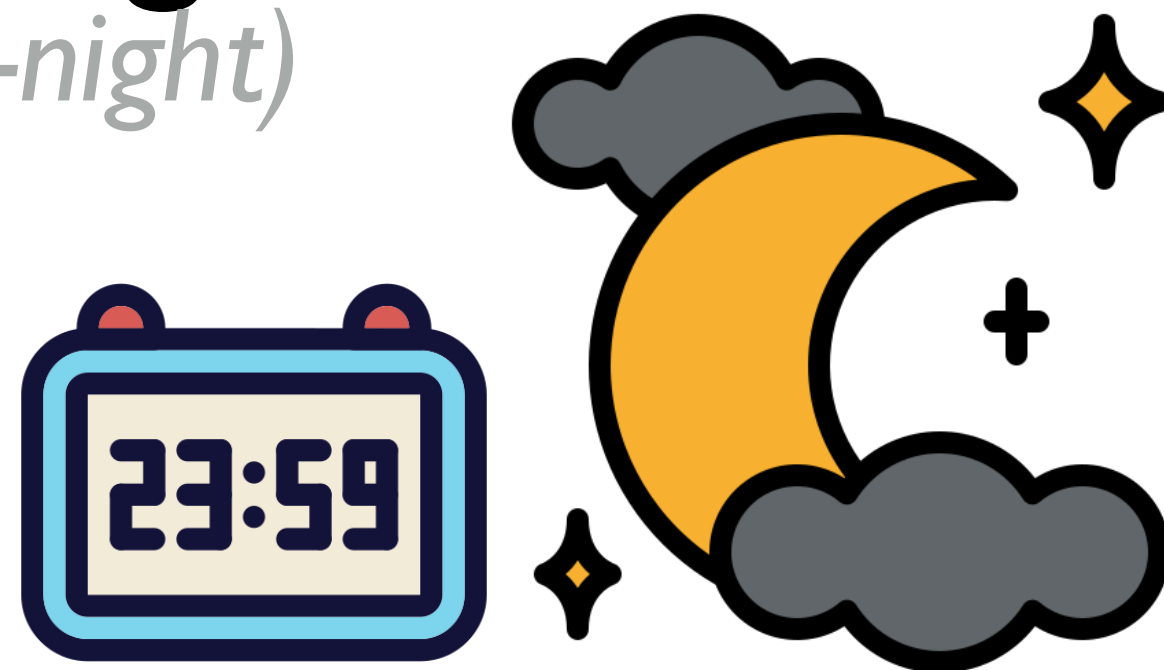
midnight  
(mid-night)

Word Class  
(noun)

Pronunciation / Syllables

Definition:

Midnight is twelve o'clock in the middle of the night.



It was 11:59pm. One minute until **midnight**.

Synonym:

Antonym:

Prefix / Suffix:

Rhyme:

Link Word:

counter-

might

past

-s

flight

approach



# Grasshopper Word of the Day

Word of the Day:

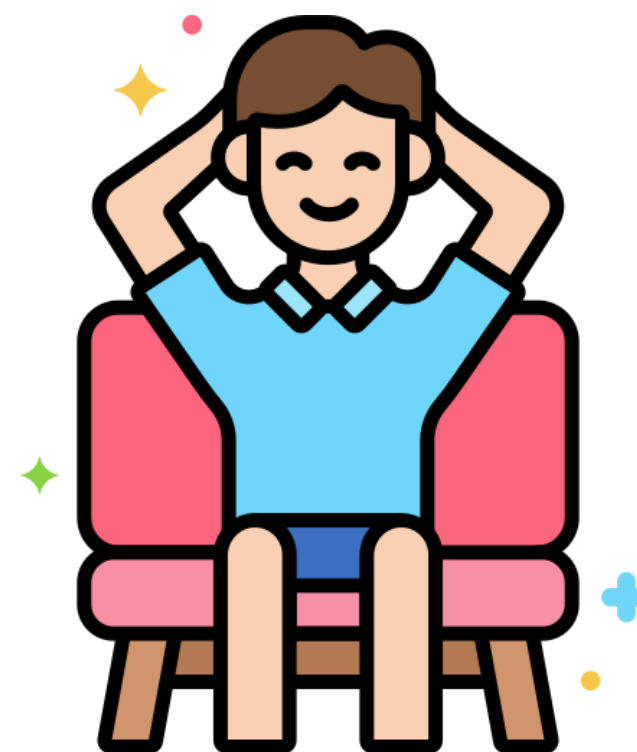
Pronunciation / Syllables

peace  
(*peace*)

Word Class  
(noun)

Definition:

If you have a feeling of peace, you feel contented and calm and not at all worried. You can also say that you are at peace.



Mr Smith relaxed in his chair and felt at **peace**.

Synonym:

calm

unity

Antonym:

noise

irritation

Prefix / Suffix:

make-

-ful

Rhyme:

police

cease

Link Word:

relaxed

calm



# Grasshopper Word of the Day

Word of the Day:

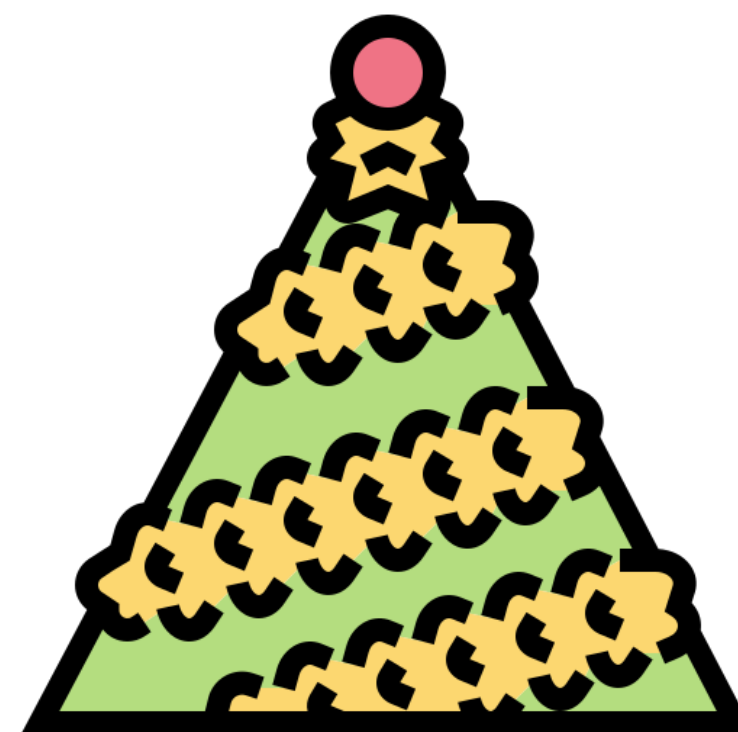
Pronunciation / Syllables

**tinsel**  
(*tin-sel*)

Word Class  
(noun)

## Definition:

Tinsel consists of small strips of shiny paper attached to long pieces of thread. People use tinsel as a decoration at Christmas.



The **tinsel** was wrapped around the tree.

Synonym:

spangle

glitter

Antonym:

Prefix / Suffix:

-ed

Rhyme:

Link Word:

tree

angel





# Grasshopper Word of the Day

Word of the Day:

Pronunciation / Syllables

**bauble**  
(*bau-ble*)

Word Class  
(noun)

Definition:

A bauble is a small, cheap ornament or piece of jewellery, normally hung on a Christmas tree.



**Baubles** of every colour were on the tree.

Synonym:

ornament

toy

Antonym:

Rhyme:

Link Word:

tree

decoration



# Shinobi Word of the Day

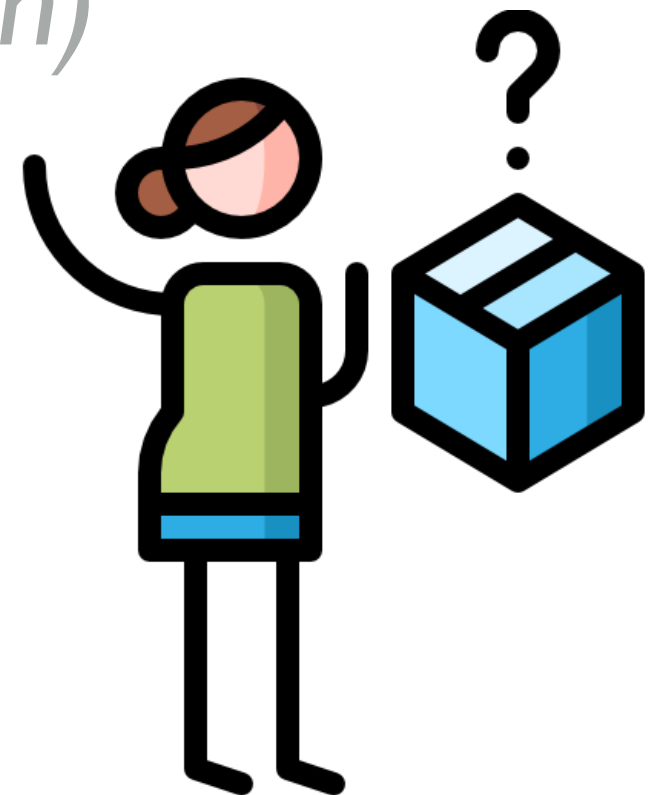
Word Class  
(noun)

Word of the Day: **anticipation**  
(an-tic-pa-tion)

Pronunciation / Syllables

## Definition:

Anticipation is a feeling of excitement about something pleasant or exciting that you know is going to happen.



Everyone was full of **anticipation** for Christmas.

Synonym:

excitement

hope

Antonym:

ignorance

fear

Prefix / Suffix:

Rhyme:

education

situation

Link Word:

feel

brace



# Shinobi Word of the Day

Word of the Day:

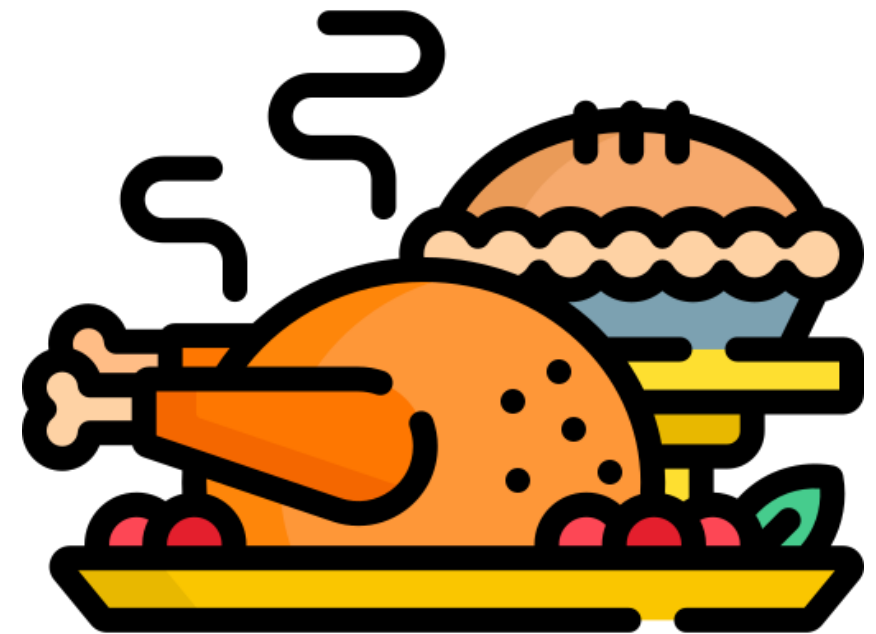
**lavish**  
(lav-ish)

Word Class  
(adjective)

Pronunciation / Syllables

## Definition:

If you describe something as lavish, you mean that it is very elaborate and impressive and a lot of money has been spent on it.



The dinner staff had prepared a **lavish** Christmas dinner.

Synonym:

luxurious

sumptuous

Antonym:

meagre

barren

Prefix / Suffix:

-ly

-ed

Rhyme:

wish

ravish

Link Word:

feel

brace



# Shinobi Word of the Day

Word of the Day:

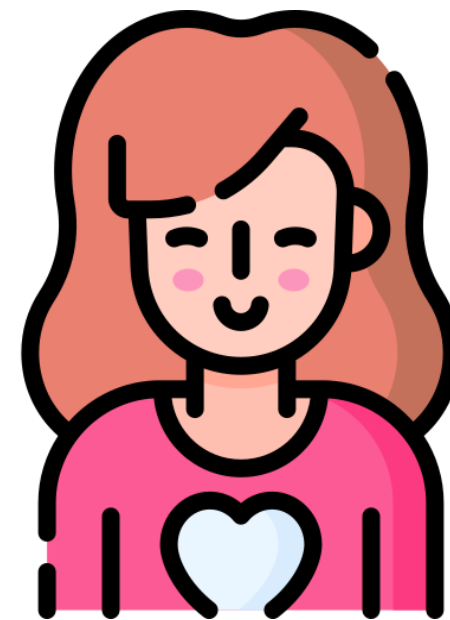
**nostalgia**  
(*nos-tal-gia*)

Word Class  
(noun)

Pronunciation / Syllables

Definition:

Nostalgia is an affectionate feeling you have for the past, especially for a particularly happy time.



Julie felt **nostalgic** as the Christmas songs played.

Synonym:

remembrance

reminiscence

Antonym:

Prefix / Suffix:

-ic

Rhyme:

education

situation

Link Word:

experience

evoke



# Shinobi Word of the Day

Word of the Day:

Yuletide  
(yule-tide)

Word Class  
(noun)

Pronunciation / Syllables

Definition:

Yuletide is the period of several days around and including Christmas Day.



The magical grotto had symbols of a **Yuletide** theme.

Synonym:

Christmas

Noel

Antonym:

Prefix / Suffix:

-ic

Rhyme:

ride

bride

Link Word:

period

joyful



# Shinobi Word of the Day

Word Class  
(noun)

Word of the Day:

Pronunciation / Syllables

eve  
(eve)

## Definition:

The eve of a particular event or occasion is the day before it, or the period of time just before it.



Alex loved Christmas. He said it was Christmas **Eve Eve!**

Synonym:

brink

night

Antonym:

middle

Prefix / Suffix:

-ning

Rhyme:

leave

heave

Link Word:

day

holy

# Vocabulary Laboratory



Describe / Definition:

Use it in a sentence:

Focus Word (write below):

Word Class:

**Synonyms:**

(words with same / similar meaning)

**Antonyms:**

(words with opposite meaning)

**Draw your sentence:**

**Rhymes:**

(words that sound the same)

**Link Words:**

(Example: football = pitch, team, player)

# Vocabulary Visualiser

Draw the  
**Grasshopper** words  
and bring them to life.



Word: gift

Word: tinsel

Word: peace

Word: bauble





# Vocabulary Visualiser

Draw the **Shinobi**  
words and bring  
them to life.



Word: lavish

Word: yuletide

Word: nostalgia

Word: eve



# Matching Meanings

Draw lines from the **Grasshopper** words to their definitions.



## Grasshopper Word

## Grasshopper Definitions

gift

\*\*\* consists of small strips of shiny paper attached to long pieces of thread. People use tinsel as a decoration at Christmas.



midnight

If you have a feeling of \*\*\*, you feel contented and calm and not at all worried. You can also say that you are at \*\*\*.



peace

A \*\*\* is something that you give someone as a present.



tinsel

A \*\*\* is a small, cheap ornament or piece of jewellery, normally hung on a Christmas tree.



bauble

\*\*\* is twelve o'clock in the middle of the night.



# Matching Meanings

Draw lines from the **Shinobi** words to their definitions.



## Shinobi Word

## Shinobi Definitions

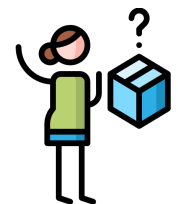
anticipation

If you describe something as \*\*\*, you mean that it is very elaborate and impressive and a lot of money has been spent on it.



lavish

\*\*\* is a feeling of excitement about something pleasant or exciting that you know is going to happen.



nostalgia

The \*\*\* of a particular event or occasion is the day before it, or the period of time just before it.



Yuletide

\*\*\* is the period of several days around and including Christmas Day.



eve

\*\*\* is an affectionate feeling you have for the past, especially for a particularly happy time.





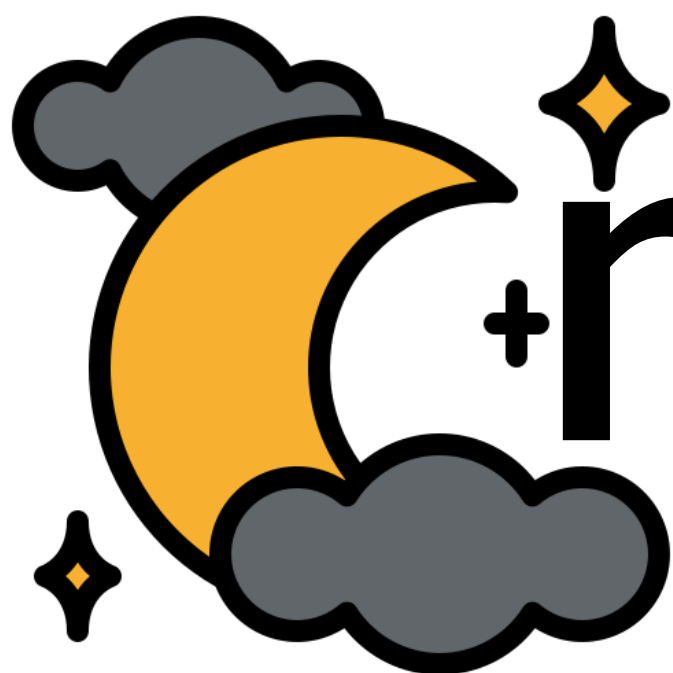
# Display Slips

The following slides are for classroom display. As you teach each Word of the Day, words can be displayed in the classroom to enable pupils to use the taught vocabulary in an independent manner.





# gift

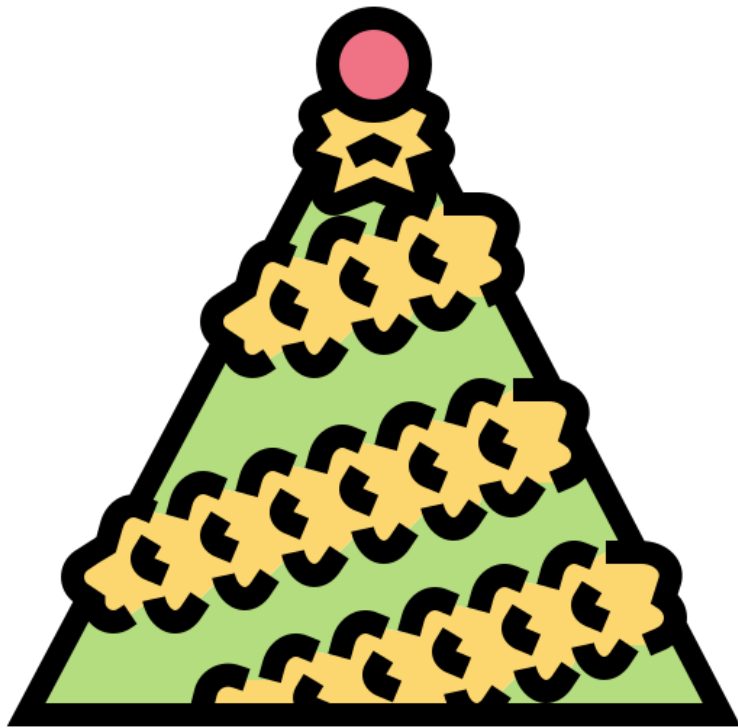
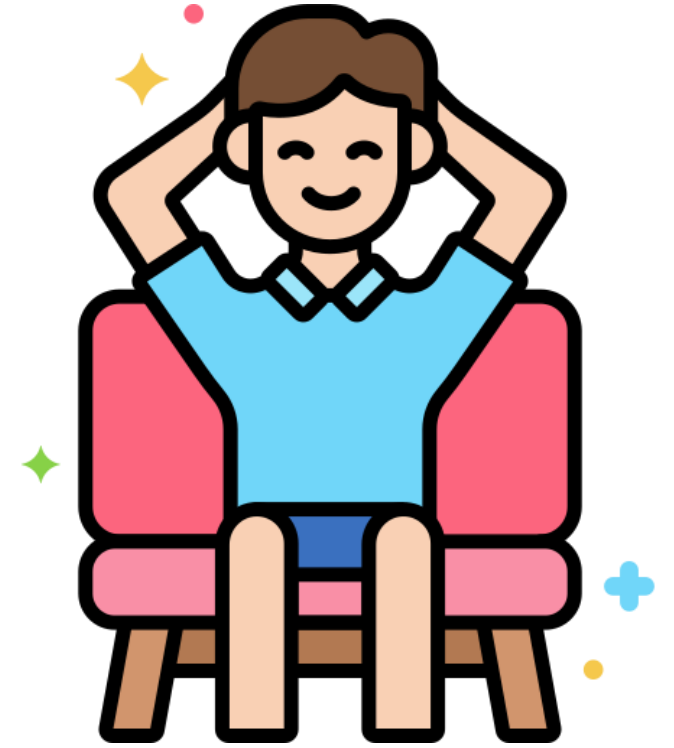


# midnight





peace

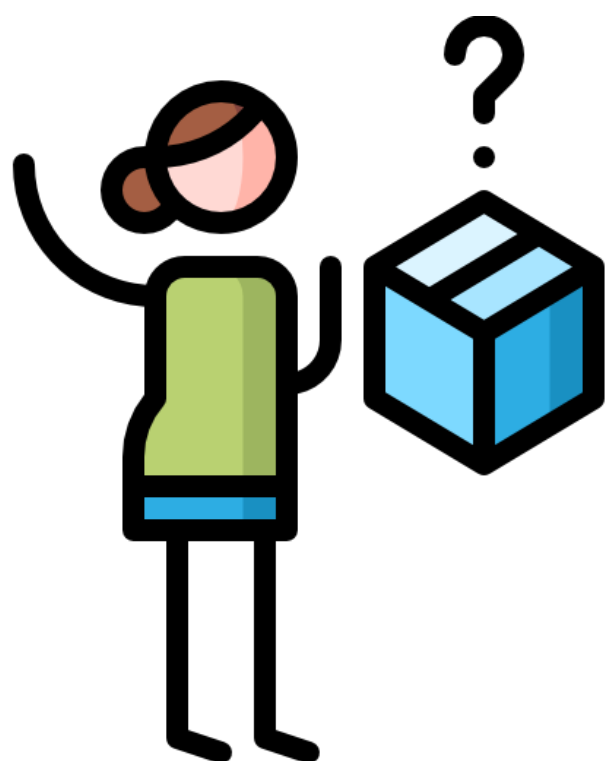


tinsel





bauble

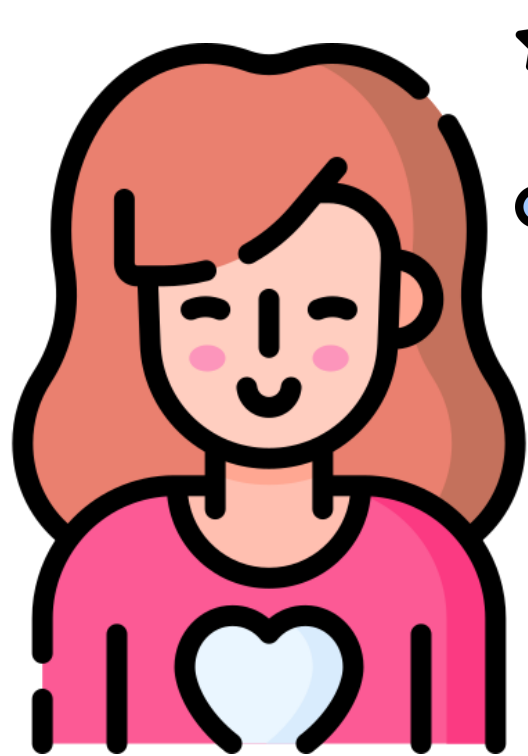


anticipation





# lavish



# nostalgia







# Yuletide



# eve

